

# MC-2005M

## MANUFACTURER

Asahi Denka Kogyo K.K. Tokyo, Japan

## IMPORTED BY:

Mitsubishi International Corporation

## LOCAL REPRESENTATIVE:



**FOR ADDITIONAL INFORMATION:  
JLM ASSOCIATES (800) 999-3959**

## PRODUCT DESCRIPTION:

**SIZE:** 20mm X 05mm - 0.78" X 0.20"

**PACKAGING INFORMATION:** 330 feet/case: 35 lbs/case

**Hardness** 30 (ASTM D2240)

**Tensile Strength** 100 psi (ASTM D412)

**Elongation (%)** 500 % (ASTM D412)

**Volume Exp. Coefficient :** 1.9

**Vulcanization** No

(Tested by press sheet of MC compound)

## GENERAL DESCRIPTION

Adeka Ultra Seal MC-2005M is a natural rubber product with a urethane rubber hydrophilic agent polymerized in the rubber. A stainless steel wire mesh is embedded in the MC-2005M. The hydrophilic agent causes the product to expand up to two times by volume when in contact with water. The wire mesh controls and directs the expansion. Expansion capability provides a "double locking" water-stop: one from rubber's natural resilience and one from the expansion.

Expansion occurs in three dimensions: width, height, and length. MC-2005M has a unique stainless steel wire mesh embedded within the material. The wire mesh restricts the expansion in the length and width dimensions and directs the expansion to increase thickness. The embedded wire prohibits "warping" or "winding" away from the concrete during premature exposure to moisture.

MC-2005M has excellent durability and resistance to chemical contaminants. It can perform in a wide range of solutions such as sea water or cement water. The material does not contain any toxic substance or heavy metals and is environmentally safe.

## BASIC USE

Used in general concrete work where water intrusion must be prevented. MC-2005M can replace conventional waterstop in many areas. Use between joints or structural elements where the movement or joint opening (after installation) will not exceed 0.05 inches.

**NOTE: MC-2005M must be placed between two rows of rebar. The required concrete coverage varies from 3.25" ~ 4.0" depending on concrete strength. For example, if concrete psi is 4260 or greater the required concrete coverage is >3.25". If the concrete psi is 2550 or less, the required coverage is >4".**

**For complete coverage information see MC Coverage Data Sheet or call 800.999.3959.**

**MINIMUM WALL HEIGHT IS 6.5 FEET**

## INSTALLATION

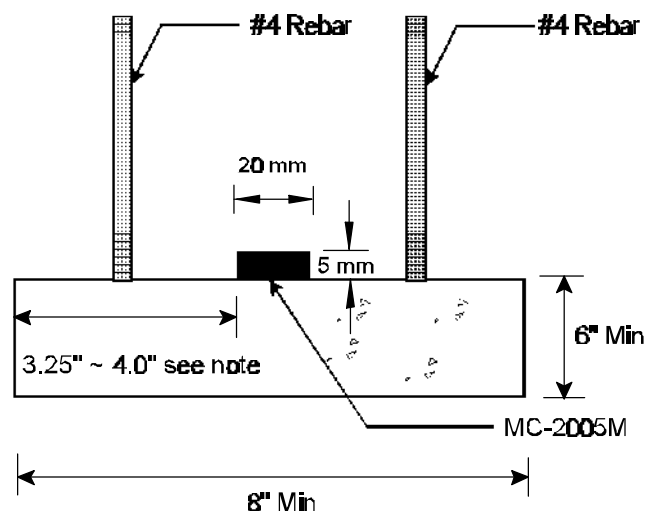
**\*ALL METHODS OF INSTALLATION REQUIRE A MINIMUM OF 3.25" ~ 4.0" DEPENDING ON CONCRETE STRENGTH. SEE NOTE.**

**SMOOTH CONCRETE SURFACE:** Blast clean (using forced air, water, etc.) debris from the surface of the concrete. Apply 3M-2141 or Bostik 1142M adhesive to SSD (saturated surface dry) concrete and allow to set approximately 15 minutes or until tacky. Press MC-2005M firmly into place. Parallel lap the ends a minimum of 2 inches when joining. Cut the strip to fit corners closely and apply P-201 over joint.

**ALTERNATE METHOD:** Use screws (or hand nail) placed approximately 12 inches apart to attach MC-2005M. Apply tension to the strip while fastening to obtain close adhesion to the concrete.

**ROUGH SURFACE:** Blast clean (using forced air, water, etc.) debris from the surface. Apply a continuous bead of P-201 to SSD (saturated surface dry) concrete. Place MC-2005M on the P-201 and nail/screw to hold in place if necessary.

## TYPICAL INSTALLATION



# ADEKA ULTRA SEAL MC-2005M

Call (800) 999-3959 for more information.

## General Installation Procedures

Prevent water penetration in concrete joints and between structural elements. Recommended for use in areas where movement or joint opening (after installation) will not exceed 0.05 inches.

Fill all voids and/or rough areas with Adeka Ultra Seal P-201 before placing MC-2005M.

There are several methods to attach MC-2005M to concrete:

1. Adeka Ultra Seal P-201

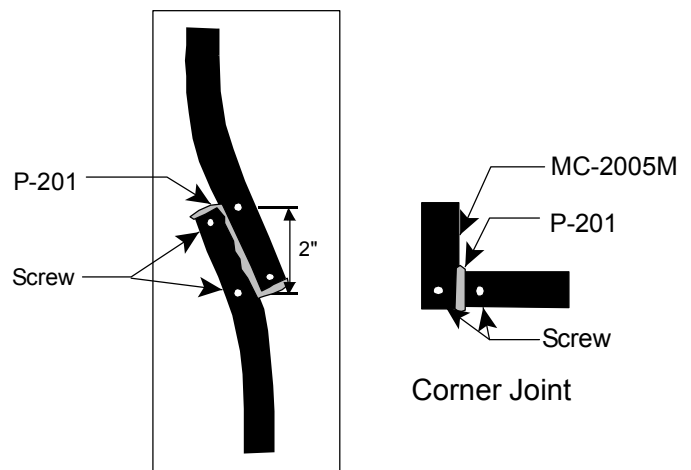
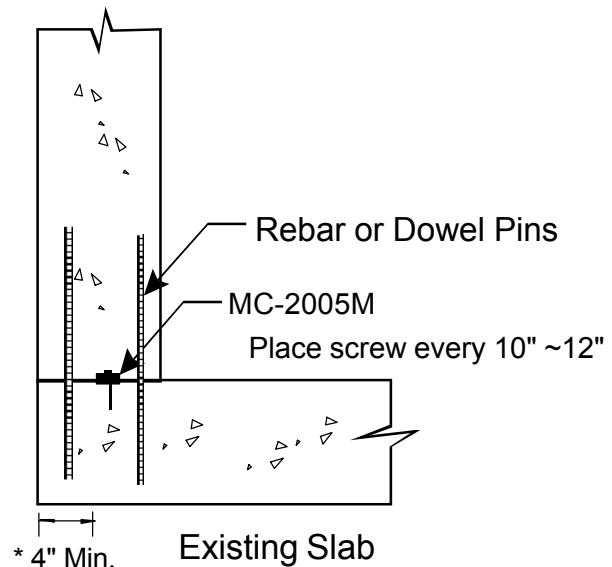
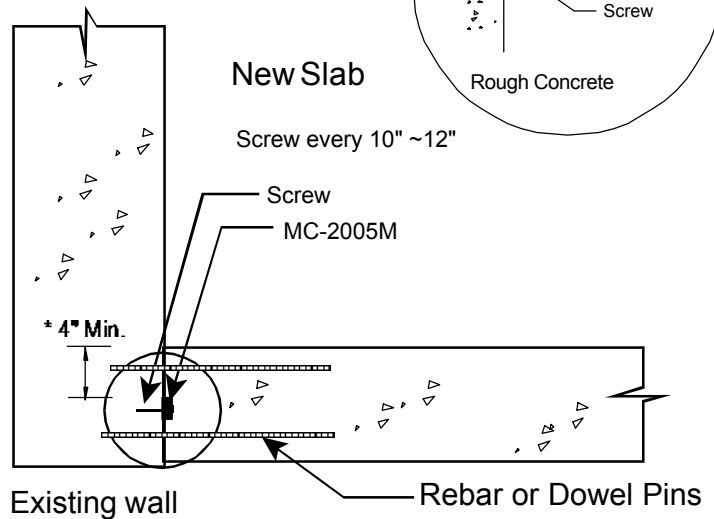
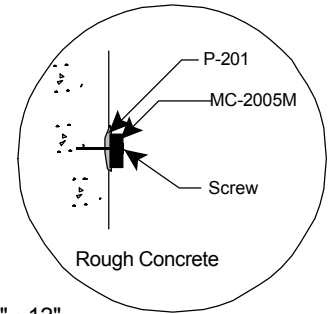
Or if concrete is smooth, clean and dry:

2. 3M-2141 rubber adhesive
3. Bostik ADH 1142M
4. Hand nailing (after P-201 or glue)
5. Screws (after P-201 or glue)

Conditions may warrant the use of a combination of methods.

Keep MC-2005M taut during attaching process. Do not allow any gap between the concrete and the MC-2005M.

**\* IMPORTANT: Concrete coverage varies from 3.25"~4.0". See note on front page. Call 800.999.3959 for coverage chart or additional information.**



Place a screw at the end of each strip  
**Side by Side Lap Procedure**

Not to Scale.