

# ADEKA ULTRA SEAL

## KBA-1510FP

### OCM, Inc.

**Sales Information: (847) 955-9700**

**Technical Information: (800) 999-3959**

**Contact Local Representative:**



PHYSICAL PROPERTIES		
PACKAGING	82 ft/case	
Properties	Value	Testing Method
Density	0.7 Mg/m <sup>3</sup>	JIS K 6268
Expansion Pressure	0.03 MPa	In house
Tensile strength	0.78Mpa	JIS K 6251
Elongation	350%	JIS K 6251
Volume expansion	30 Vol %	In house

### DESCRIPTION:

KBA-1510FP is a compressible, expanding sponge rubber waterstop. KBA-1510FP is 15mm X 10 mm in cross section and comes packaged in 25 meter (82 feet) per case.

### GENERAL USE:

The product is designed for non-moving joints. Because of its low expansion pressure, it can be used in areas with a minimum of one inch of good quality concrete coverage.

Lower expansion pressure allows the product to be used between the wet face of the concrete and the rebar provided there is a minimum of one inch of concrete coverage. Placing KBA-1510FP in this position will protect the rebar from moisture.

KBA-1510FP is suitable for use between non-moving pre-cast segments where tolerances are within the limits of KBA-1510FP (KBA-1510 FP must be compressed in all areas).

### HYDROSTATIC HEAD:

#### Pressure Test:

1. Hold pressure for 3 minutes for every 0.05 MPa (7.1 psi) increase.
2. Increase pressure in 0.05MPa increments until leak is detected.
3. Discontinue test for one week.
4. Resume test with above sequence - increasing pressure by 0.10 MPa (14.2 psi)

### Results:

**NO LEAKAGE** at 0.20 MPa (28.4 psi - approximately 57 foot hydrostatic head).

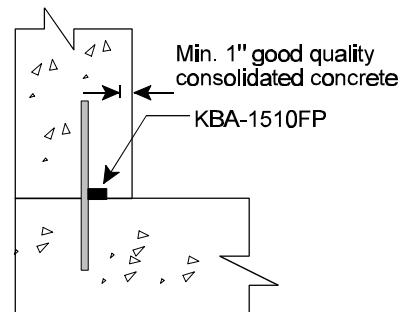
### BASIC INSTALLATION:

#### METHOD 1 (Smooth Concrete):

1. Surface of the concrete must be clean and dry. Remove any loose debris.
2. Rubber adhesive may be used if concrete is smooth. Paint both concrete and KBA-1510FP. Allow adhesive to become tacky (approximately 15 minutes) - firmly press KBA-1510FP onto adhesive.
3. Place concrete without displacing or disturbing the position of the waterstop.

#### METHOD 2 (Rough Concrete - can be used on smooth concrete):

1. Surface of the concrete must be clean and dry. Remove any loose debris.
2. Apply small bead of Adeka Ultra Seal P-201 (1/16" X 3/8")
3. Firmly press KBA-1510FP into the P-201 while it is still in the paste state.
4. Use a wet tool or gloved finger to remove any excess P-201.
3. Place concrete without displacing or disturbing the position of the waterstop.



Typical Installation - Can be placed between double rows of rebar

Call your local Technical Representative or **(800) 999-3959** for additional information.

# ADEKA ULTRA SEAL KBA-1510FP

## ATTACHMENT PROCEDURES

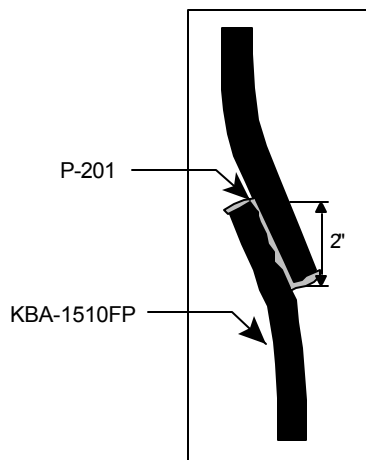
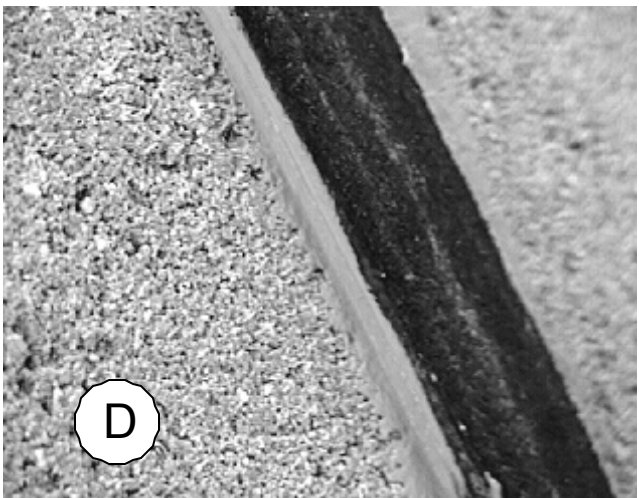
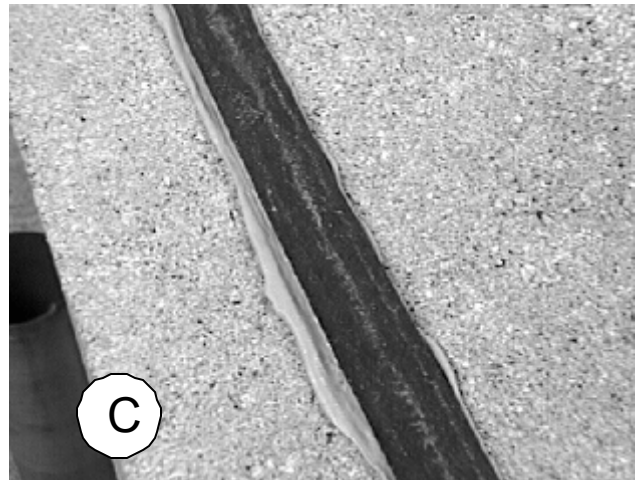
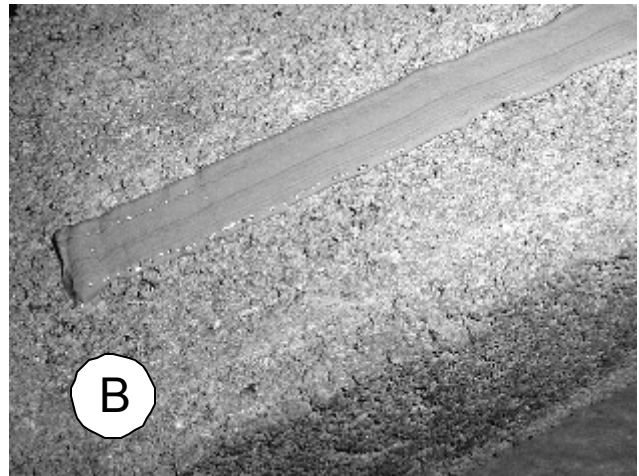
### P-201:

Cut nozzle at the tip (A).

On smooth concrete, apply  $\frac{1}{16}$ " X  $\frac{3}{8}$ " bead to the area where the KBA-1510FP will be attached. Apply thicker bead if the concrete is rough. There must be sufficient P-201 to fill any rough areas or voids. On smooth concrete one cartridge of P-201 will cover approximately 40~50 feet (B).

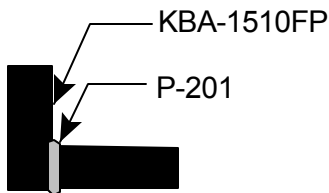
Press KBA-1510FP into the P-201 while it is still in the paste state. Note some P-201 will be forced out to the side (C).

Remove excess P-201. Use a small wet pointing tool or similar tool to remove and smooth P-201 (D).



Adhere ends with rubber adhesive or P-201

### Side by Side Overlap Procedure



Corner Joint

FOR MORE INFORMATION CALL:  
**(800)999-3959**