


Screed Flat

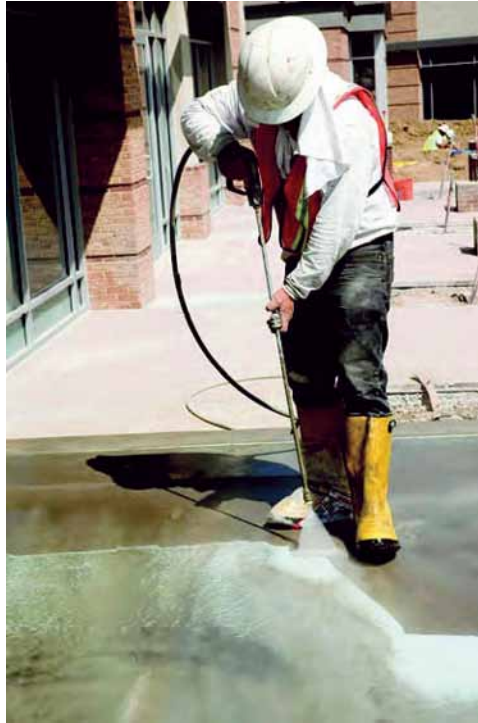
Roller Tamp

Application

- Place concrete at a 4 inch – 5 inch maximum slump.
- Screed FLAT, this is very important particularly for the Micro Finishes (03–15).
- Bull float with a wooden bull float in both directions.
- Roller Tamp or Jitterbug in both directions. For Micro Finishes Only (03-15).
- Bull float a second time.
- Wait until the bleed water has left before you do anything further.
- Do all your edge work next, edge the slab with a metal edger then break the surface again with a wood float.
- Begin the finish of the slab as you would with a mag float.
- At this point, you need to decide how you want the final surface, additional passes with a steel trowel compacts the final surface or tightens the surface. The big point now is to make sure that no “Bird Baths” or dips in the final surface show up. The intention is to get a tightly finished “flat” surface.
- If you choose to only make one pass, apply the Top-Cast as soon as the finisher comes off the slab with their skates or kneeboards. Moisture is needed in the top surface of the slab to react with the Top-Cast. Look for a surface that you can wipe your hand across to feel and see moisture. This is the key time of the process. Do not wait too long, early application is far better than too late.
- Apply the Top-Cast with a Hudson type sprayer with an adjustable nozzle or a fan type nozzle with a .3–.5 gpm. Apply Top-Cast with a sprayer at a rate of 175–350 ft²/gal.
- The Top-Cast will dry on the surface in about 20 minutes or so, depending on the temperature.
- The Top-Cast, once dry will resist a light rain. You may also place tarps over the slab to maintain heat in cooler temperatures as well as protect from standing rainwater. We would advise if you are tarping with insulated tarps, to first cover with plastic to protect from drag marks.

Prepping for Surface Retarder

- In very hot weather, a water based curing agent may also be used over the Top-Cast to aide in etch retention as well as moisture retention in the surface allowing the retarded matrix to be more easily removed.
- You can begin washing the retarded surface off in a little as 4 hours. The concrete surface must be adequately hard to resist the cleaning process. Generally wash the slab 12 to 16 hours later. The slab can be washed up to 24 hours later, this is totally dependent upon the mix design and ambient temperatures as well as job site conditions and the washing procedures used.
- Use a power washer with about 1500 PSI and a 25 degree fan nozzle, do not get too close to the slab as you will leave deeper marks the closer you get. Try washing from about 6 to 10 inches away. Use a stiff bristle brush to help with this process. Wash until clear water runs from the surface. The Top-Cast surface may also be removed using a buffer and scouring pad with a clear water rinse following. This is particularly useful on the lightest grades of Top-Cast.
- Let dry and then seal.

*Powerwash**Rinse*

Refer to www.daytonsuperior.com for latest Technical Data Sheet and MSDS
 1125 Byers Road, Miamisburg OH 45342
 Customer Service: (888) 977-9600
 Technical Assistance: (866) 329-8724