

ADEKA ULTRA SEAL MC-2005T OCM, Inc.

Sales Information: (847) 955-9700
 Technical Information: (800) 999-3959
 Contact Local Representative:



FOR CONCRETE CONSTRUCTION/COLD JOINTS

GENERAL DESCRIPTION

Adeka Ultra Seal MC-2005T is a chemically modified natural rubber product. The patented process chemically binds a hydrophilic agent to the rubber. This permits the seal to undergo controlled expansion when in the presence of moisture. This expansion capability provides a "double locking" waterstop. One from rubbers' natural resilience and one from expansion. Any void, within the limits of the product's volume expansion coefficient, will be filled by the expansion of the seal when it is hydrated. MC-2005T is manufactured with an adhesive backing for ease of installation.

Expansion occurs in three dimensions: width, height, and length and will follow the direction of least resistance. Therefore it is important to have waterstop completely encapsulated. MC-2005T requires a minimum of 4.0 ~ 5.0 inches of concrete coverage. See MC coverage chart for complete information. Visit www.adeka.com for coverage chart.

MC-2005T has excellent durability and resistance to chemical contaminants. It can perform in a wide range of solutions such as sea water or cement water. The material does not contain any toxic substance or heavy metals and is environmentally safe.

BASIC USE

Used in general below grade concrete joint work where hydrostatic head does not exceed 50 feet. MC-2005T is designed to replace conventional waterstop in many applications.

NOTE: MC-2005T must be placed between two rows of rebar. The required concrete coverage varies from 4.0" ~ 5.0" depending on concrete strength. For example, if concrete psi is 4260 or greater the required concrete coverage is 4.0". If the concrete psi is 2550 or less, the required coverage is 5.0". For complete coverage information see MC Coverage Data Sheet or call 800.999.3959.

MINIMUM WALL HEIGHT IS 6.5 FEET

PRODUCT DESCRIPTION:

SIZE: 20mm X 5mm - 0.78" X 0.20"

PACKAGING INFORMATION: 330 feet/case: 35 lbs/case

Hardness A30 (JIS K 6253) (ASTM D2240)

Tensile Strength (MPa) 0.9 (JIS K 6251) (ASTM D412)

Elongation (%) 560 % (JIS K 6251) (ASTM D412)

Volume % Change : 120 % (In House)

Vulcanization No

Specific Gravity 1.18 (JIS K 6350) (ASTM D792)

(Tested by press sheet of MC compound)

* **Property measurements are representative and are not considered as standard values**

INSTALLATION

ALL METHODS OF INSTALLATION REQUIRE A MINIMUM OF 4.0" ~ 5.0" SEE NOTE

METHOD 1: (Attaching waterstop to smooth concrete):

SEE ALTERNATE METHOD PAGE 3

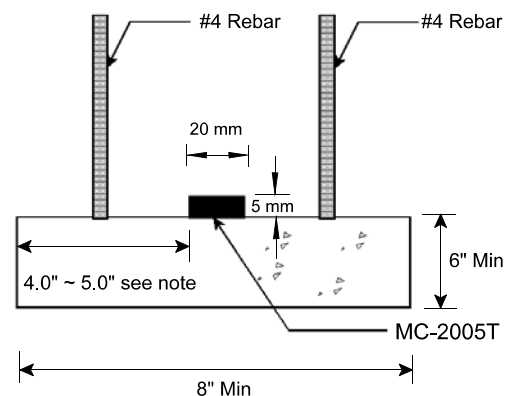
1. Surface of the concrete must be clean, dry and free from any loose debris.
2. Paint both concrete with appropriate adhesive (3M-2141, Bostik 1142, Scotch Grip 1357 or equal). Allow adhesive to become tacky (approximately 15 minutes) - remove release paper and firmly press MC-2005T onto adhesive.
3. Place concrete without disturbing the position of the waterstop.

METHOD 2: Rough concrete

SEE ALTERNATE METHOD PAGE 3

1. Concrete must be clean and free from standing water.
2. Apply small bead of Adeka Ultra Seal P-201. Use enough P-201 to fill any void between MC-2005T and the concrete surface)
3. Firmly press MC-2005T into the P-201 while it is still in the paste state. Hold with a small screw approximately every 12 inches on vertical applications or on horizontal when concrete will be placed within 2 days. Butyl rubber bead may be used in some cases. Call 800.999.3959 for more information.
4. Use a wet tool or gloved finger to remove any excess P-201.
3. Place concrete without displacing or disturbing the position of the waterstop.

TYPICAL INSTALLATION



ADEKA ULTRA SEAL MC-2005T

Call (800) 999-3959 for more information.

General Installation Procedures

Prevent water penetration in concrete joints and between structural elements.

For use in non-moving joints only.

Fill all voids and/or rough areas with Adeka Ultra Seal P-201 before placing MC-2005T.

There are several methods to attach MC-2005TM to concrete:

1. Place on bead of Adeka Ultra Seal P-201 and fasten with screws
2. Place on bead of butyl rubber

Or if concrete is smooth, clean and dry:

Fast setting adhesives - for example:

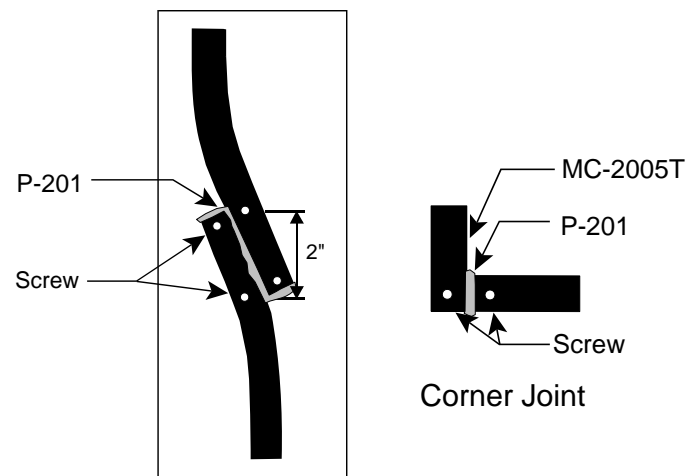
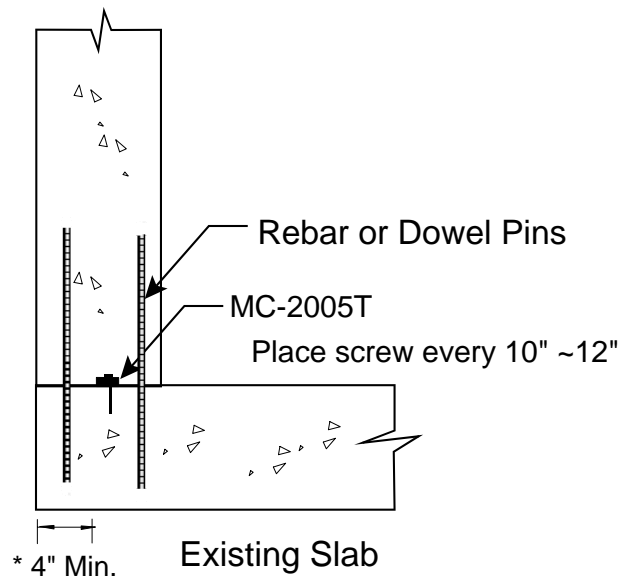
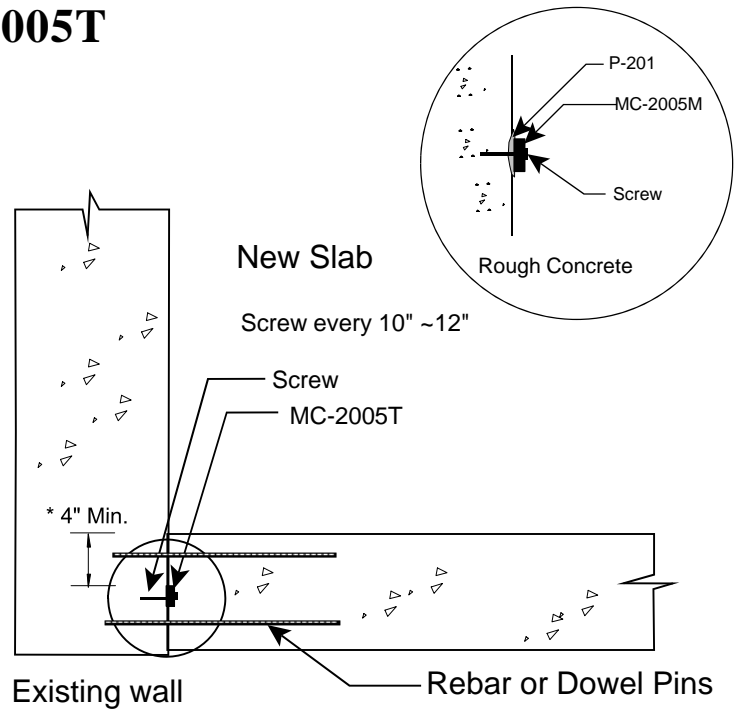
3. 3M-2141 rubber adhesive, Bostik ADH 1142M, Scotch Grip 3M-1357, 3M 80 Spray Adhesive, 3M 92 Spray Adhesive, or similar

3. Screws (after P-201 or glue)

Conditions may warrant the use of a combination of methods.

Keep MC-2005T taut during attaching process. Do not allow any gap between the concrete and the MC-2005T.

*** IMPORTANT: Concrete coverage varies from 4.0"~5.0". See note on front page. Call 800.999.3959 or visit www.adeka.com for coverage chart or additional information.**



Place a screw at the end of each strip
Side by Side Lap Procedure

Not to Scale.

ADEKA WATERSTOP WITH BUTYL TAPE



Use butyl tape to attach MC-2005T or KBA-1510FP to a **dry and clean** substrate. The butyl tape comes in a 3/4" X 1/8" X 82 foot roll (1 roll per roll of KBA-1510FP).

Press the butyl strip onto the substrate and remove the release paper. Press the KBA-15010FP or MC-2005T (remove release paper from MC-2005T) onto the butyl tape. Press firmly.

Check for any gaps between the product and the substrate. If gaps are present, fill in using Adeka P-201 applied to the side of the strip. Use P-201 on corner joints and on side-by-side splice joints as usual. You can place concrete immediately - no waiting for curing time.

You can use the butyl tape to attach on vertical planes or overhead. Check to make sure the product is firmly adhered before placing concrete. Use the butyl tape to attach Adeka KBA-1510FP or MC-2005T for pipe penetrations. It can be used to attach around the block out and/or around the pipe.

Butyl tape can be used to attach KBA-1510FP on precast applications as well. MC-2005T is not suitable for precast. MC-2005T is designed for CIP use only.

For a leak proof application, always verify that the product is firmly attached and that P-201 is used on corner/splice joints before placing concrete. Make sure the concrete is well consolidated around the waterstop.

Contact:

800.999.3959 for more information

info@adeka.com
www.adeka.com